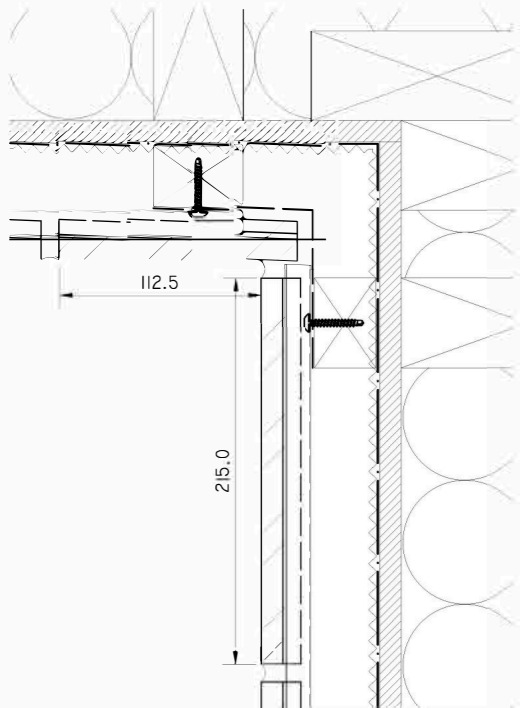


# Timber Framed Substrate 90 Degree Internal Return

- ~~~~~ = Indicates the primary weather line, designed and supplied by others
- \* = project specific, designed by others
- \*\* = project specific, supplied by others
- \*\*\* = project specific, designed and supplied by others

The SureBrick system is designed to transfer all of its dead loads (self weight), live loads and wind loadings back to the main substructure.

## Alternate Course (based on stretcher bonded brickwork)



**Additional Vertical Exterior Grade or Treated Timber Battens\*\*\***  
Support should be positioned directly behind the Forterra SureBrick rail at the internal return.

