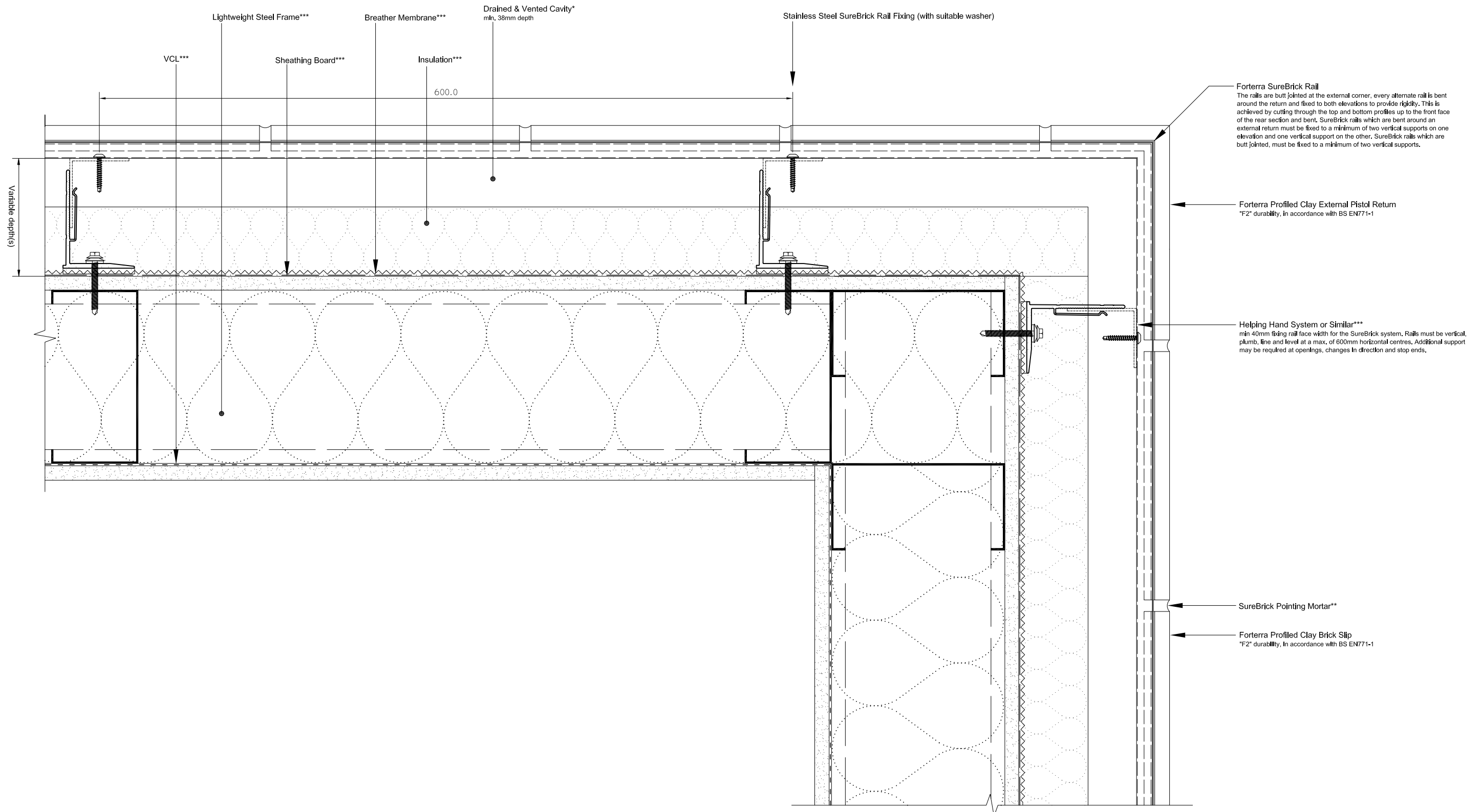


Steel Framed Substrate 90 Degree External Return

- ~~~~~ = Indicates the primary weather line, designed and supplied by others
- * = project specific, designed by others
- ** = project specific, supplied by others
- *** = project specific, designed and supplied by others

The SureBrick system is designed to transfer all of its dead loads (self weight), live loads and wind loadings back to the main substructure.
The steel frame substructure and any secondary support system must be designed to accommodate all of these loads.



For further information, please contact our dedicated team: Atherstone Road, Measham
Swadlincote, Derbyshire DE12 7EL

Tel. +44 (0) 330 123 1018

Email. asktechnical@forterra.co.uk
Web. www.forterra.co.uk

Revision. A | Date. 17/02/2020
Drawing ref. 02-004