



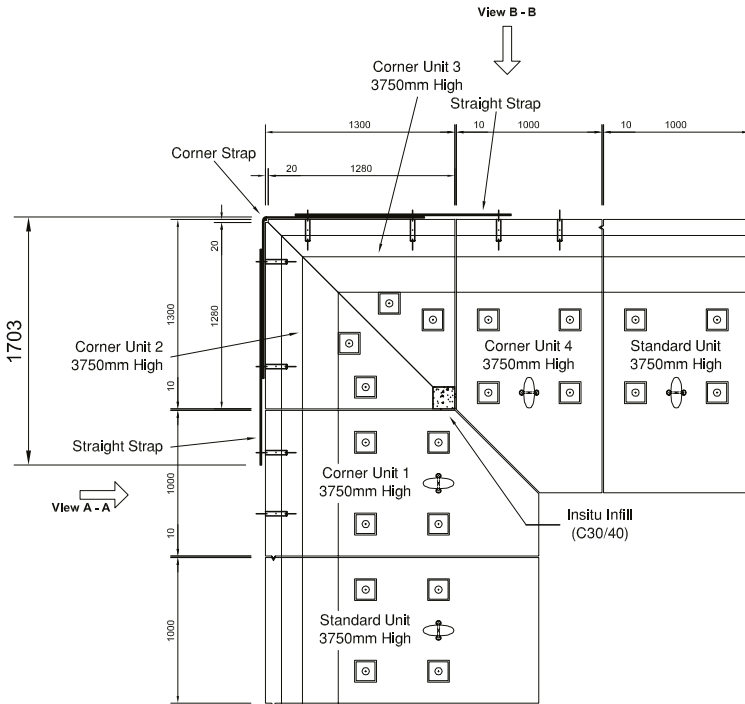
**BISON PRECAST**

a Forterra brand

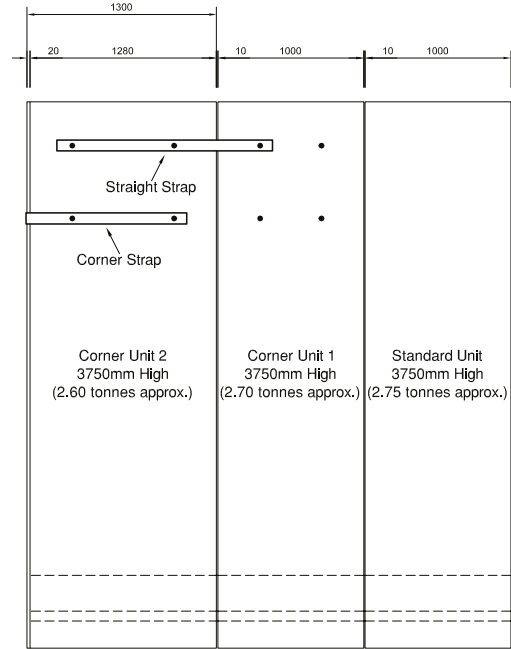
# 3.75M RETAINING WALL

Corner Layout - Drawing number: 100

Note: Do not scale from this drawing. If in doubt, please ask for confirmation of any dimension.



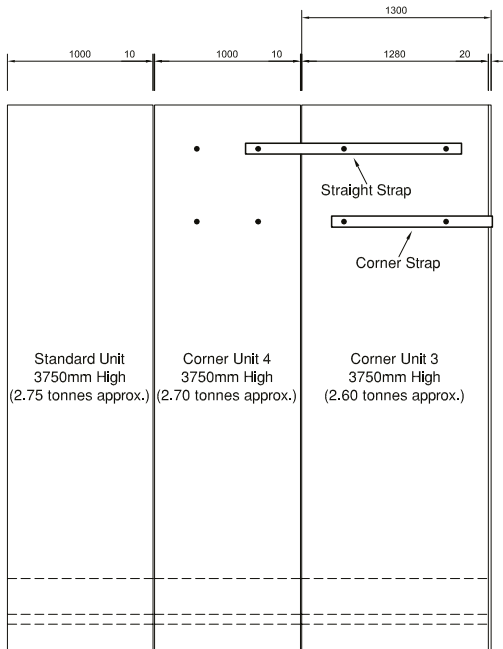
Corner Section Plan



View A - A

**Height:** 3750mm  
**Width:** 3300mm  
**Depth:** 3300mm  
**Total weight:** 16.1t  
**Embedment:** 375mm

See individual unit details above for individual weights.



View B - B

A	Minor amendments.	DC	11/03/13
rev	amendment	by	date
<b>BISON PRECAST</b>		<b>fc</b>	
<b>BISON PRECAST</b>		:state ©	
job Retaining Wall			
title Retaining Wall - 3750mm High Corner Layout			
date 31/01/2013	job no HBP-RW		
scale 1:25	drwn D. Chamberlain		
checked -	drg no 100	rev A	



**BISON PRECAST**

a Forterra brand

# 3.75M RETAINING WALL

Ancillary Items

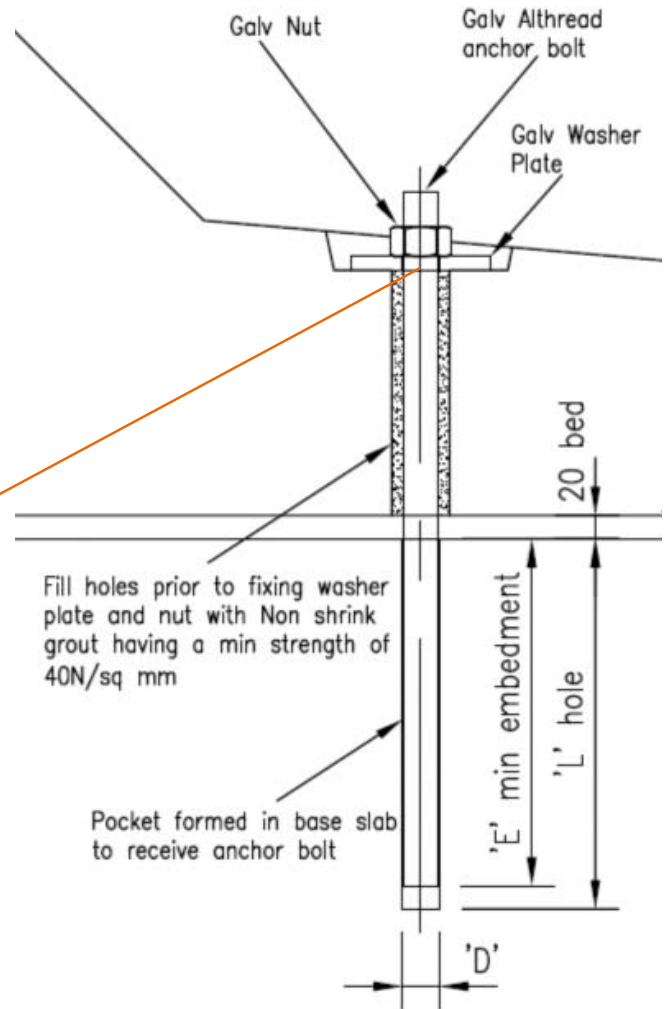
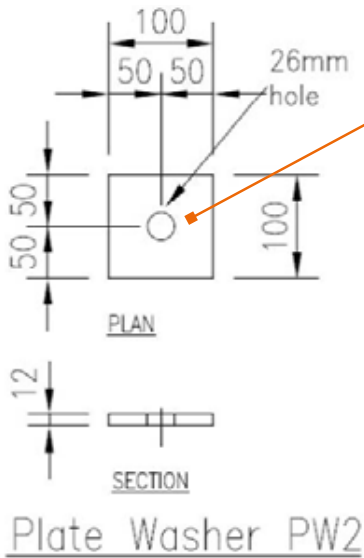
Note: Do not scale from this drawing. If in doubt, please ask for confirmation of any dimension.

## Loose items schedule: per 3.75m unit

No.	Item
20	M24 (Grade 8.8) Galv Althread x 6951g
20	M24 Galv Nuts
20	100 x 100 x 12thk Galv Plate washer (Ref: PW2)

Grouted in using C32/40 non-shrink grout

All loose items available direct from Bison Precast. Please enquire for further details.



Anchor Bolt Detail

OUR PEOPLE. OUR PASSION. OUR PRODUCTS

The components you need for a more successful project.

Bison Precast - Tetron Point - William Nadin Way - Swadlincote - Derbyshire - DE11 0BB

01283 817 500 concrete@bison.co.uk bison.co.uk