



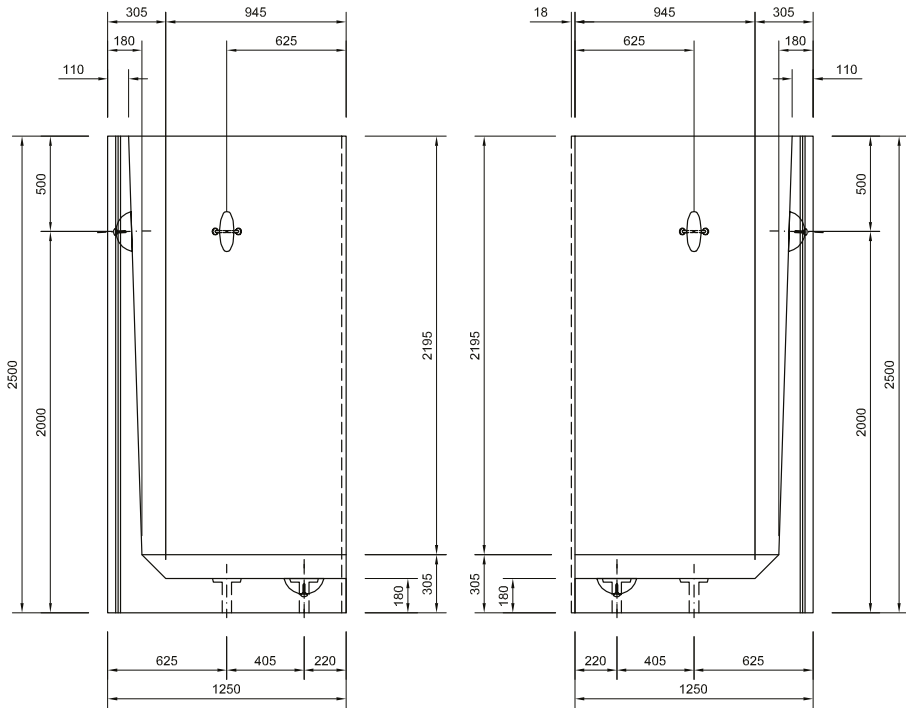
BISON PRECAST

a Forterra brand

2.50M RETAINING WALL

Corner Layout - Drawing number: 30

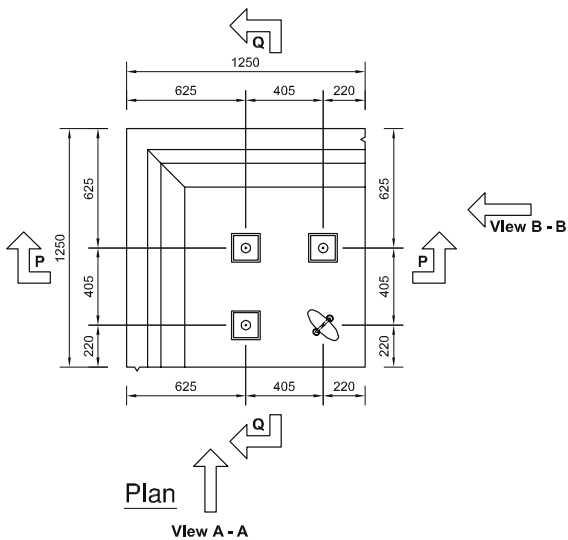
Note: Do not scale from this drawing. If in doubt, please ask for confirmation of any dimension.



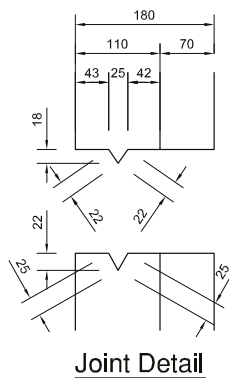
View A - A

View B - B

- Height: 2500mm
- Width: 1250mm
- Depth: 1250mm
- Weight: 2.75t
- Embedment: 250mm



Plan View A - A



Joint Detail

NOTES:

- CONCRETE GRADE - 50/60
- COVER TO REINFORCEMENT - 45mm Nominal (Minimum 40mm)

rev	amendment	by	date
BISON PRECAST		fc	
BISON PRECAST		state ©	
job Retaining Wall			
title Retaining Wall - 2500mm High Corner Unit			
Volume 1.10 cu.m. Weight 2.75 tonnes.			
date	12/12/2012	job no	HBP-RW
scale	1:25	drwn	D. Chamberlain
checked	-	drg no	30
		rev	-



BISON PRECAST

a Forterra brand

2.50M RETAINING WALL

Ancillary Items

Note: Do not scale from this drawing. If in doubt, please ask for confirmation of any dimension.

Loose items schedule: per 2.50m unit

No.	Item
3	M24 (Grade 8.8) Galv Althread x 490lg
3	M24 Galv Nuts
3	100 x 100 x 12thk Galv Plate washer (Ref: PW2)

Grouted in using C32/40 non-shrink grout

All loose items available direct from Bison Precast. Please enquire for further details.

