



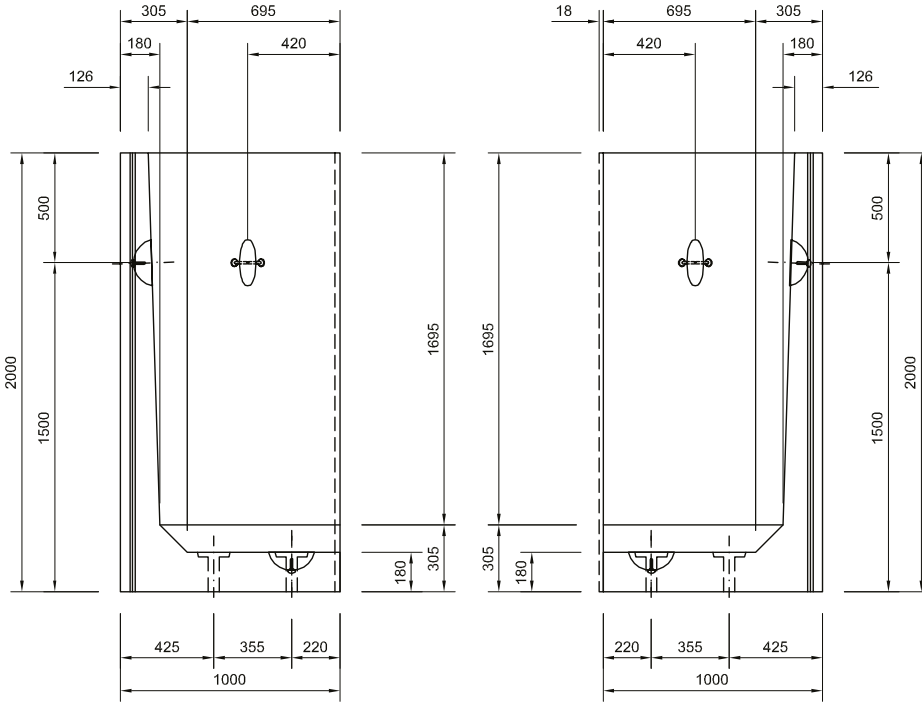
BISON PRECAST

a Forterra brand

2.00M RETAINING WALL

Corner Layout - Drawing number: 40

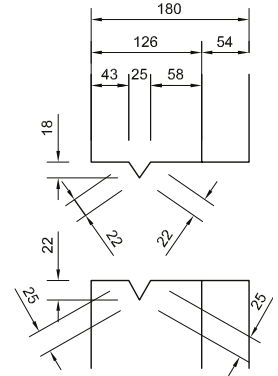
Note: Do not scale from this drawing. If in doubt, please ask for confirmation of any dimension.



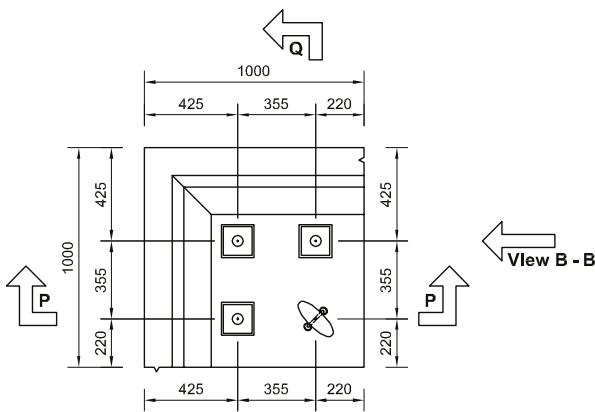
View A - A

View B - B

- Height: 2000mm
- Width: 1000mm
- Depth: 1000mm
- Weight: 1.78t
- Embedment: 250mm



Joint Detail



Plan

View A - A

NOTES:

- CONCRETE GRADE - 50/60
- COVER TO REINFORCEMENT - 45mm Nominal (Minimum 40mm)

rev	amendment	by	date
-	-	-	-
BISON PRECAST		fc	
BISON PRECAST		:state ©	
job Retaining Wall			
title Retaining Wall - 2000mm High Corner Unit			
Volume 0.711 cu.m. Weight 1.78 tonnes.			
date	12/12/2012	job no	HBP-RW
scale	1:25	drw no	40
drawn	D. Chamberlain	rev	-
checked	-		



BISON PRECAST

a Forterra brand

2.00M RETAINING WALL

Ancillary Items

Note: Do not scale from this drawing. If in doubt, please ask for confirmation of any dimension.

Loose items schedule: per 2.00m unit

No.	Item
3	M20 (Grade 8.8) Galv Althread x 4851g
3	M20 Galv Nuts
3	100 x 100 x 10thk Galv Plate washer (Ref: PW3)

Grouted in using C32/40 non-shrink grout

All loose items available direct from Bison Precast. Please enquire for further details.

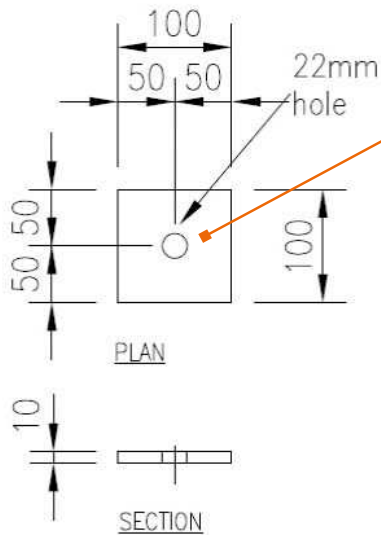
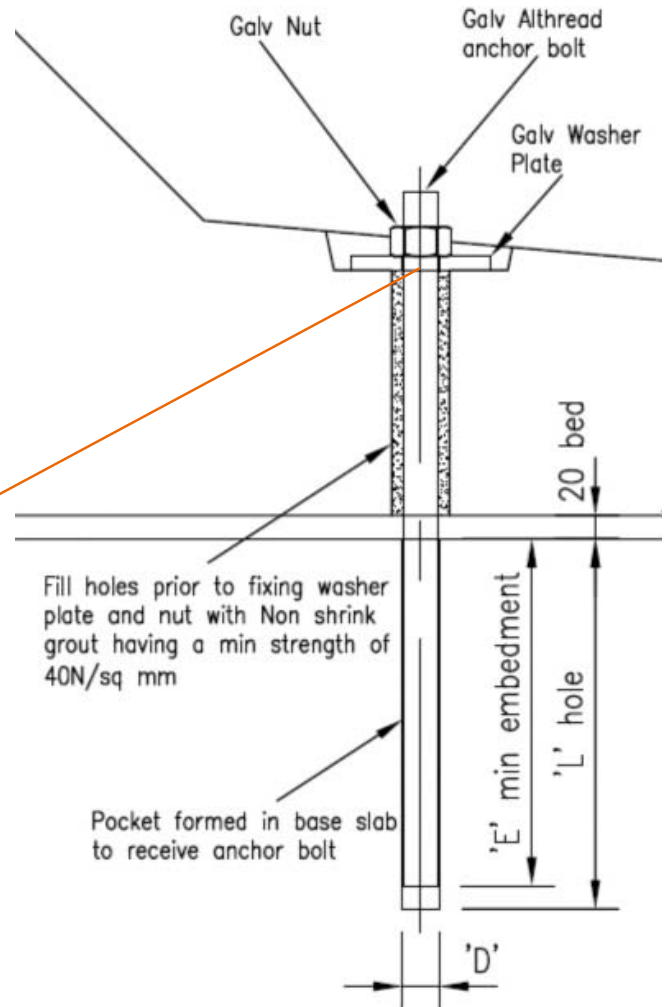


Plate Washer PW3



Anchor Bolt Detail