



Horne Terrace

Brick type

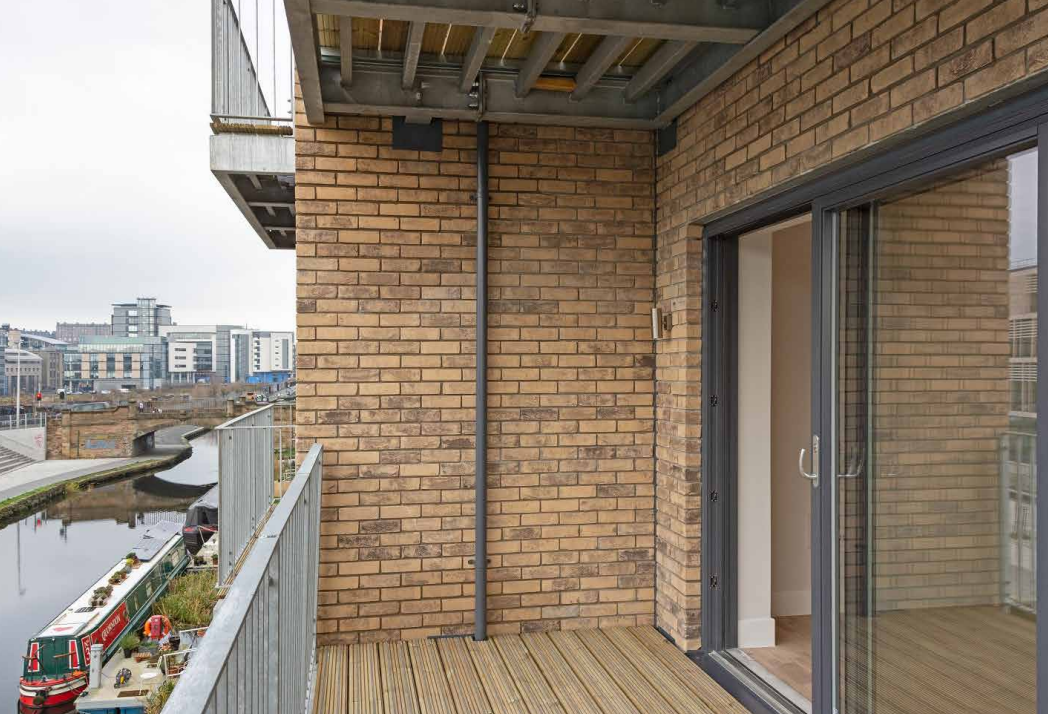
Belgravia Gault Blend

Location

Edinburgh

Sector

Residential



The Challenge

A former industrial area along the south bank of the Union Canal in Merchiston, Edinburgh required transformation with the expected outcome of becoming one of the places to live in the city centre. A housing development was to provide a stylish addition to the already thriving growing community.

The development consists of 11 stylish, one, two and three-bedroom apartments. The apartments feature high quality engineered flooring, bespoke kitchens, designer bathrooms and fitted wardrobes, and each has a terrace or balcony enjoying open views over the canal.

It was important that the building materials used were sympathetic to the local sandstone buildings.

The Solution

The original intention had been to use extruded bricks for the project, however, it was decided instead to use Forterra's buff, stock thrown, Belgravia Gault Blend from its Ecostock range. A total of 55,000 bricks were used in the construction of Horne Terrace.

The Benefits

Belgravia Gault Blend complemented beautifully the sandstone aesthetic of the buildings in the locality, while at the same time delivering great technical specification of low water absorption and low embodied carbon.



5 Grange Park Court
Roman Way
Northampton
NN4 5EA

Tel: +44 (0)1604 707 600
forterra.co.uk