



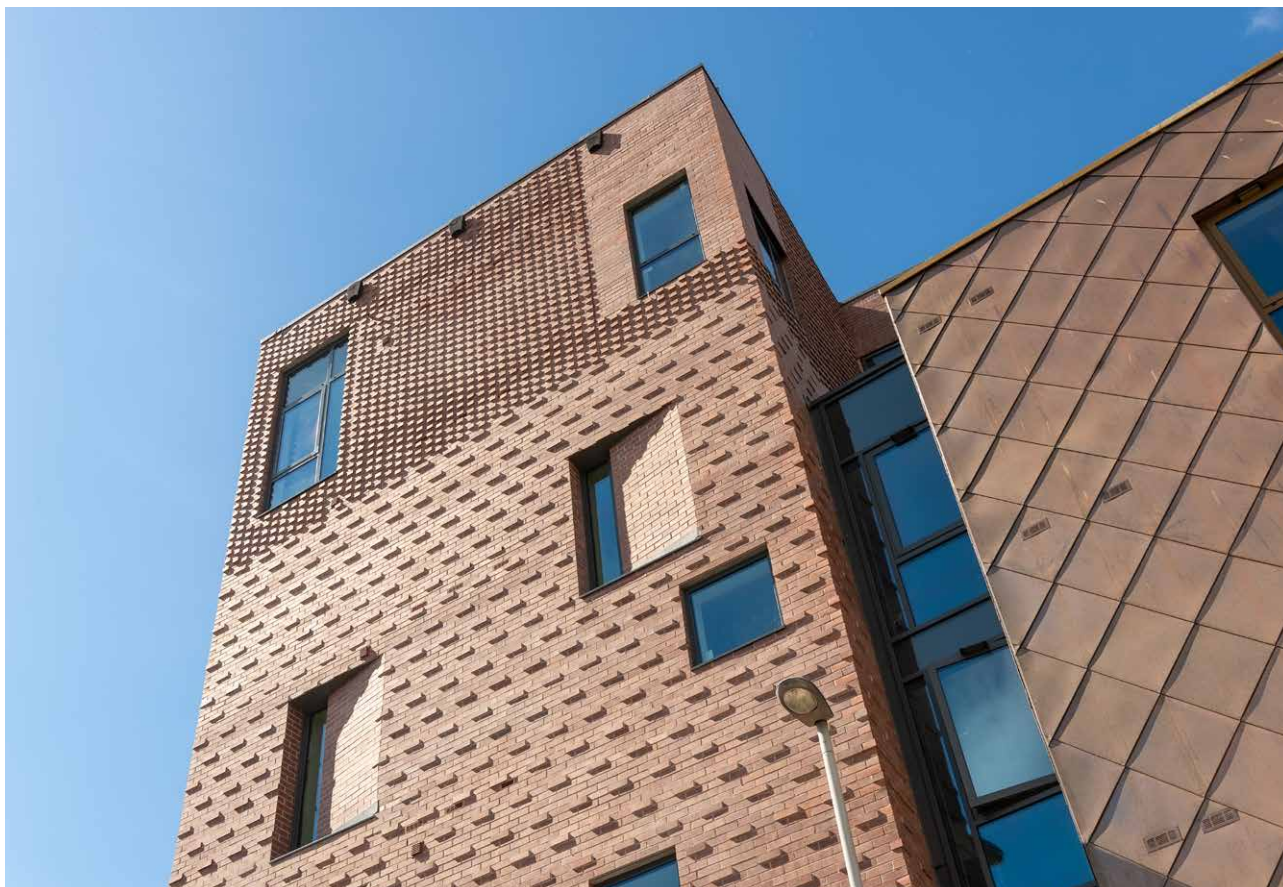
BUTTERLEY

BRICK

a Forterra brand

County Multi Smooth available in 65mm and 73mm

County Multi Smooth



Manufactured to BS EN 771-1

Brick type

Category II, U, Clay Masonry Unit

Standard work size

215 x 102.5 x 65 & 73mm

Dimensional tolerances

Tolerance category: T2

Range category: R1

Compressive strength

$\geq 75\text{N/mm}^2$

Water absorption

$\leq 7\%$

Durability

F2

Active soluble salts content

S2

Configuration

Vertically Perforated 23-28% Voids

Dry weight per brick

2.50kg

Pack size

504

Factory

Wilnecote



Disclaimer: The reproduction of colours and textures is only as accurate as the printing process will allow. Photographic samples should be used when shortlisting products but we advise that an actual sample should be seen before ordering.



222 Peterborough Road
Whittlesey
Cambridgeshire
PE7 1PD

Sales 0330 123 1017
Technical 0330 123 1018

Fax 01733 206040

forterra.co.uk