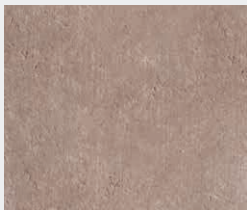




Bullnose Kerbs have been developed to provide a softer profile edge restraint. Transitions, internal/external corners and radius kerbs are also available. Designed to complement the Aquaflo, Royal Forest and Ecogranite range.

### Standard Bullnose Colours

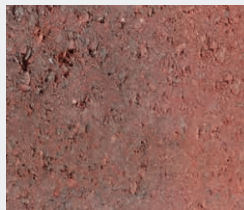
For an accurate colour match please request a sample.



Natural



Charcoal



Red Brindle



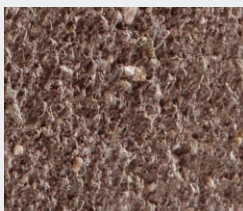
Golden Brindle

### Ecogranite Bullnose Colours

For an accurate colour match please request a sample.



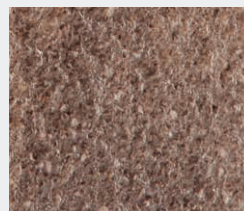
Cornish Silver Grey †



Balmoral †



Tintagel †



Truro †

**UP TO 77% BY-PRODUCT MATERIAL**

One of the most sustainable paving options currently available.



## Specification

### Block sizes

125x190x100mm (blocks per pack)

180

Coverage per pack (m<sup>2</sup>)

18m linear

Weight per pack (tonne)

1.14

### Finishes

Standard & Textured †

Ecogranite †

Internal & external corners and transitions also available

Manufactured to BS EN 1340:2003

\* Colour purposes only. † Special order.