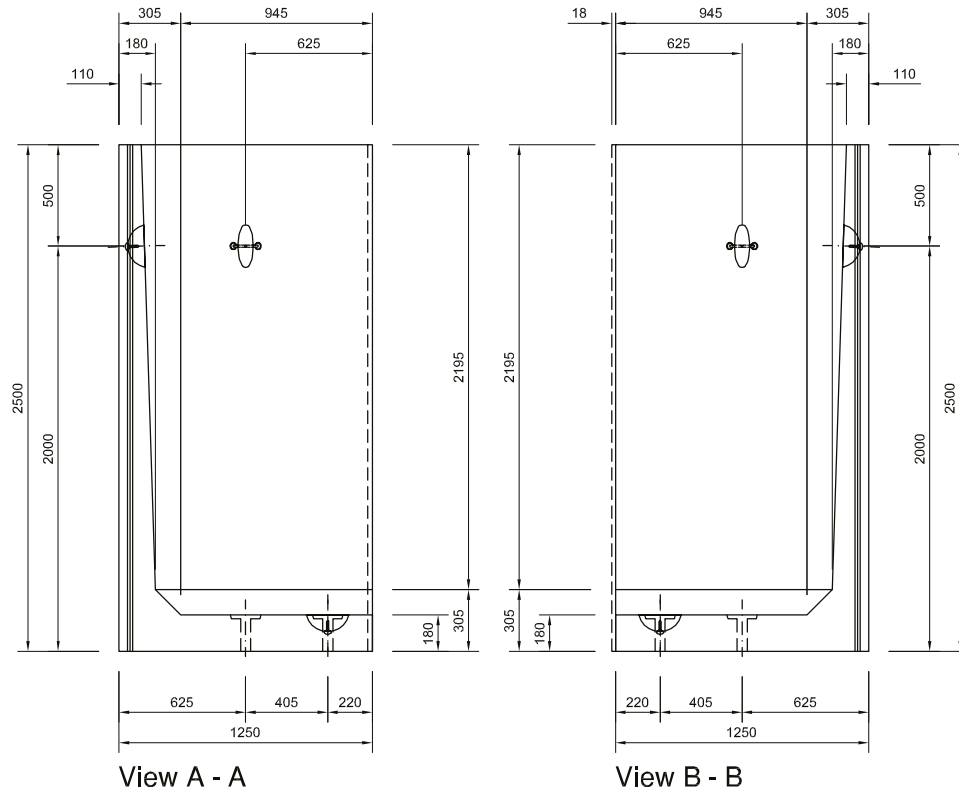


# 2.50m Retaining Wall

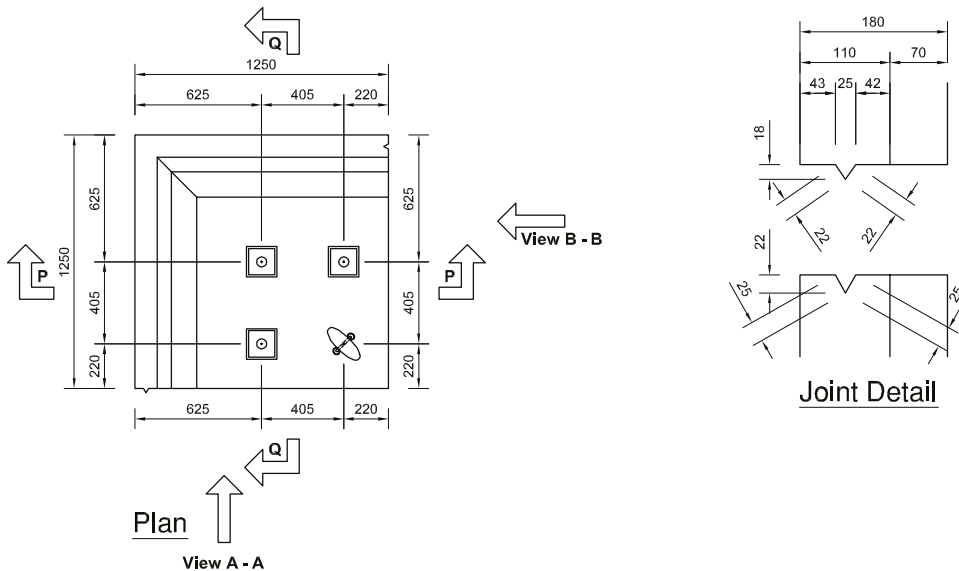
CORNER LAYOUT. Drawing number: 30


**Precast Products**

Note: Do not scale from this drawing. If in doubt, please ask for confirmation of any dimension.



Height: 2500mm  
 Width: 1250mm  
 Depth: 1250mm  
 Weight: 2.75t  
 Embedment: 250mm



rev	amendment	by	date
-	-	-	-
 Birchwood Way, Cotes Park Industrial Estate Alfreton, Derbyshire, DE55 4NH Tel 01773 602432 Fax 01773 603134			
job Retaining Wall			
title Retaining Wall - 2500mm High Corner Unit Volume 1.10 cu.m. Weight 2.75 tonnes.			
date	12/12/2012	job no	HBP-RW
scale	1:25	drawn	D. Chamberlain
checked	-	drg no	30
		rev	-

**NOTES:**

CONCRETE GRADE - 50/60  
 COVER TO REINFORCEMENT - 45mm Nominal (Minimum 40mm)

For further information please call or email our dedicated sales team.

→ **01773 600 211**  
 retainingwalls@forterra.co.uk



# 2.50m Retaining Wall

## ANCILLARY ITEMS

## Precast Products

Note: Do not scale from this drawing. If in doubt, please ask for confirmation of any dimension.

### Loose items schedule: per 2.50m unit

No.	Item
3	M24 (Grade 8.8) Galv Althread x 490lg
3	M24 Galv Nuts
3	100 x 100 x 12thk Galv Plate washer (Ref: PW2)

Grouted in using C32/40 non-shrink grout

All loose items available direct from Forterra.  
Please enquire for further details.

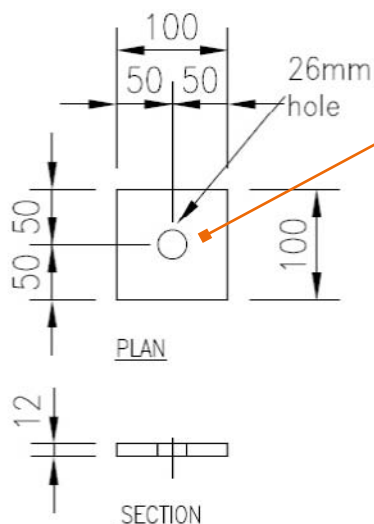
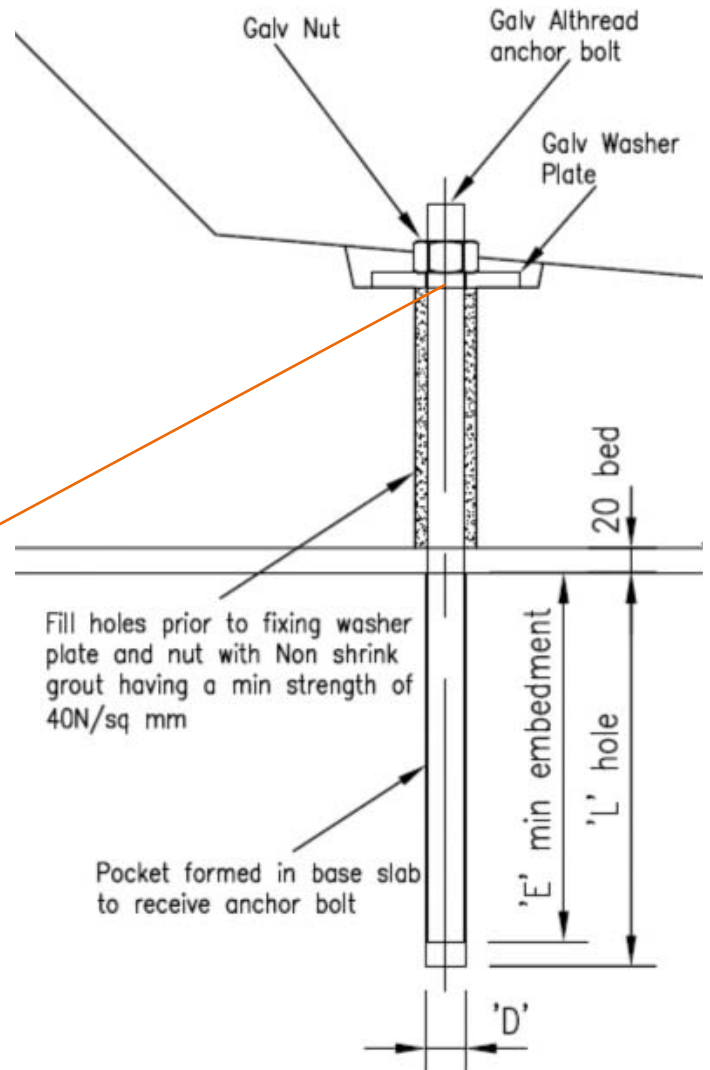


Plate Washer PW2



Anchor Bolt Detail

For further information please call  
or email our dedicated sales team.

→ **01773 600 211**

[retainingwalls@forterra.co.uk](mailto:retainingwalls@forterra.co.uk)



All content copyright © 2015 Forterra