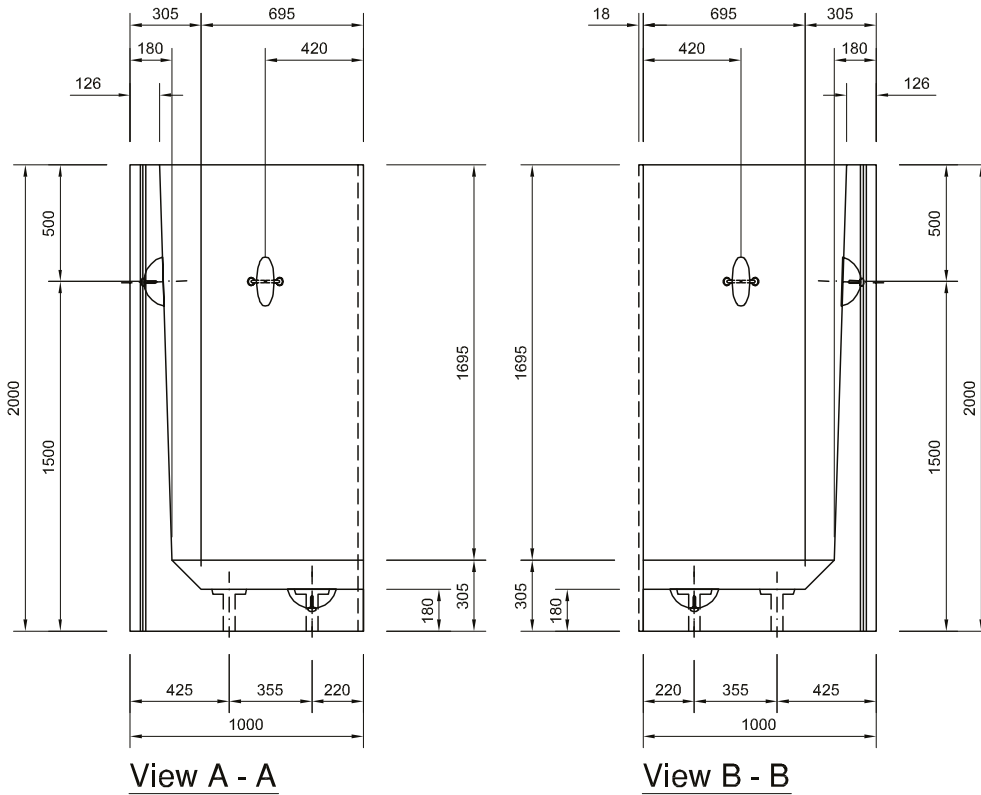


2.00m Retaining Wall

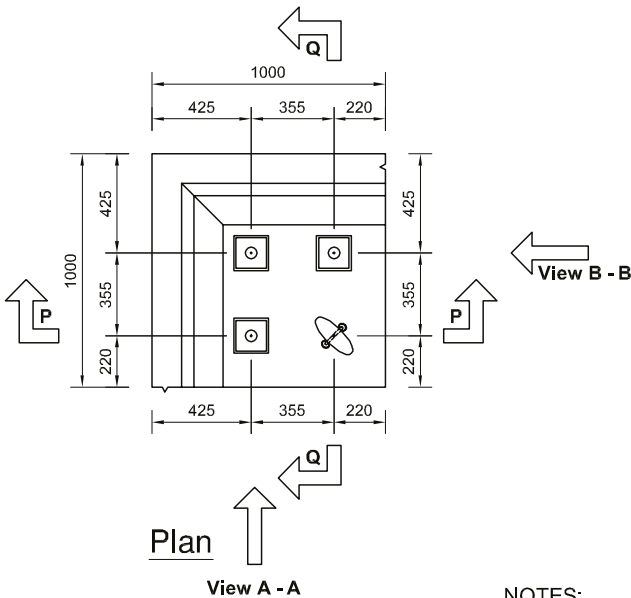
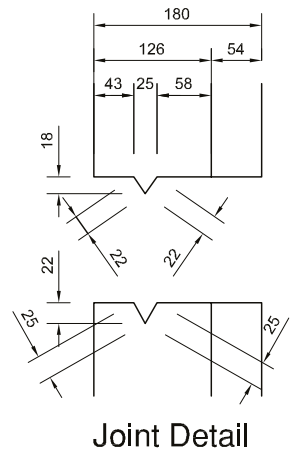
CORNER LAYOUT. Drawing number: 40

Precast Products

Note: Do not scale from this drawing. If in doubt, please ask for confirmation of any dimension.




Height: 2000mm
 Width: 1000mm
 Depth: 1000mm
 Weight: 1.78t
 Embedment: 250mm



NOTES:

CONCRETE GRADE -
 COVER TO REINFORCEMENT -

50/60
 45mm Nominal
 (Minimum 40mm)

rev	amendment	by	date
-	-	-	-
 Birchwood Way, Cotes Park Industrial Estate Alfreton, Derbyshire, DE55 4NH Tel 01773 602432 Fax 01773 603134			
job Retaining Wall			
title Retaining Wall - 2000mm High Corner Unit Volume 0.711 cu.m. Weight 1.78 tonnes.			
date	12/12/2012	job no	HBP-RW
scale	1:25	drawn	D. Chamberlain
checked	-	drg no	40
		rev	-

For further information please call
 or email our dedicated sales team.

→ **01773 600 211**
retainingwalls@forterra.co.uk



2.00m Retaining Wall

ANCILLARY ITEMS

Precast Products

Note: Do not scale from this drawing. If in doubt, please ask for confirmation of any dimension.

Loose items schedule: per 2.00m unit

No.	Item
3	M20 (Grade 8.8) Galv Althread x 4851g
3	M20 Galv Nuts
3	100 x 100 x 10thk Galv Plate washer (Ref: PW3)

Grouted in using C32/40 non-shrink grout

All loose items available direct from Forterra.
Please enquire for further details.

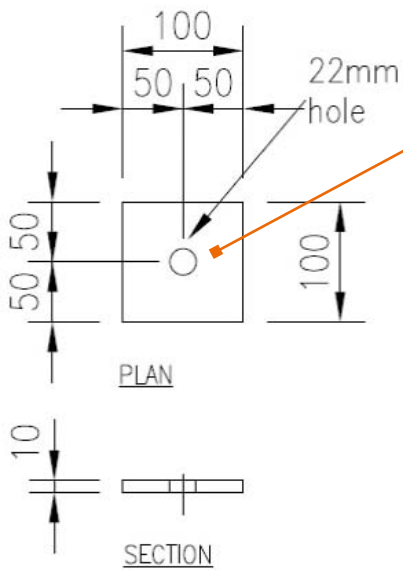
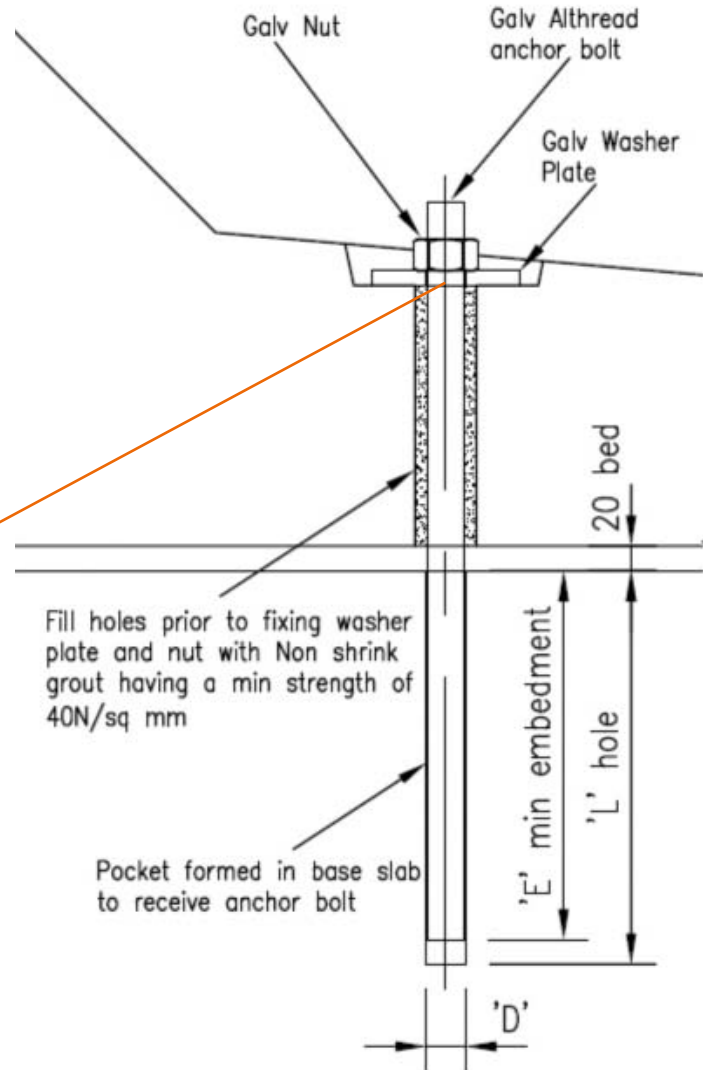


Plate Washer PW3



Anchor Bolt Detail

For further information please call
or email our dedicated sales team.

→ **01773 600 211**

retainingwalls@forterra.co.uk



All content copyright © 2015 Forterra